



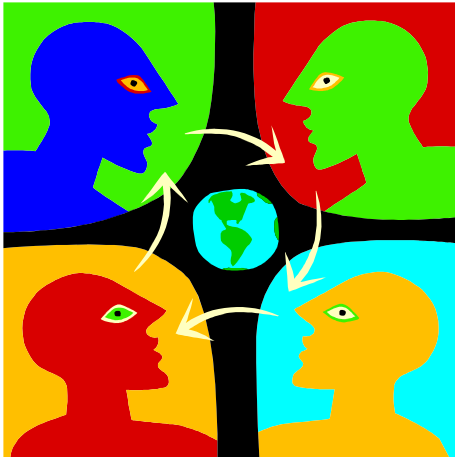
*The Project Management Institute*

**Olympia Chapter Meeting**  
December 14, 2004, 5:30 to 9:00 PM  
TYEE CONFERENCE CENTER, TUMWATER

Sponsored by:  **briskin consulting**

## **An Open Space Mini-Conference**

Facilitated by Joelle Lyons Everett, SOUND RESOURCES



How do we become better project managers? What new opportunities do we see on the road ahead of us, and where are the potholes? How can we help our organizations and communities, and how can PMI offer resources we can draw on?

Come share your vision, your wishes and dreams. The work of this session will contribute to the shaping of coming events . . . in your lives, at our chapter, and beyond.

The Open Space format will make it easy to talk to other people who share your interests, concerns and passions. Any issue that you care deeply about will be on the table, if you care to put it there.

Our special dinner will be portable, a buffet of substantial hors d'ouvres, so you can easily join the discussions that intrigue you. *The meeting hours will be extended a little, with the buffet open at 5:30, welcome and introduction to Open Space at 6:15, lively small-group discussions, and finally closing comments 8:30 to 9:00.*

**More about Open Space:** How did Boeing engineers companywide collaborate in just a few days to dramatically improve airplane door design? How did AT&T turn on a dime to expand its presence at the 1996 Olympics? Answer: Open Space conferences. Come learn more about this powerful technique for collaborating on solutions. Check out Open Space at: <http://www.openspacetechnology.com/articles/aw-boeing.html>, and <http://www.opencirclecompany.com/OSATTStory.htm>.

### **Biography**

Joelle Lyons Everett is the president of SOUND RESOURCES, an international consulting organization that helps organizations and individuals create new futures. She has been an external consultant to businesses, nonprofits, government agencies, schools, and individuals for twenty-plus years, often working with groups who are in a major organizational transition or transformation. She is an active member of the worldwide Open Space community, and edits an occasional online newsletter for the Open Space Institute (US). In 2001, she spent a month in Siberia, working with a team of Washington State women to offer a weeklong Leadership Institute for women leaders of Siberian NGOs, and traveling to consult with women's organizations in remote regions.

**You must register AND guarantee payment by December 10 to participate.**

**Register with:** [Applause Event Services](#) **By phone:** 360.349.5415

**Online:** <http://www.applauseevents.net/registrations.htm>

**Cost:** PMI Members \$25, Non-members \$30

**Time:** 5:30 to 9:00 PM with food for all

**Place:** The Tyee Conference Center at 5757 Littlerock Rd, Tumwater, WA 360.753.9199

1. From Interstate 5 (I-5), take exit 102.
2. Proceed west on Trospen Road for 1/3 mile.
3. Turn left at the Littlerock Road stoplight.
4. Proceed for 1/3 mile. Turn right into the Tumwater Center parking lot. (Across from the Costco driveway).

**Email Notification:** Email [membership@pmiolympia.org](mailto:membership@pmiolympia.org) to be added to our email list for future meetings!

**PMI Olympia January 18, 2005 Program (you can register now!):**

*Project Management in State Government* - Bill Kehoe, Chief Information Officer at the Department of Licensing will speak on how developing project management best practices moved the agency into the e-commerce era.